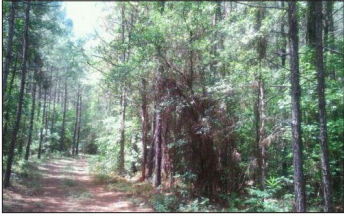


# Clarendon County



## **Manning \$149,430**

Great recreational tract; ideal hunting and four wheeling property. 51 Acres.

**Susan G. Floyd (864)331-1600**  
Listed by LoA: 1002924



## **Manning \$204,600**

Located near I-95, includes pine saw timber. Great hunting tract. 66 Acres.

**Douglas Cutting (843)534-3911**  
Listed by LoA: 733680



## **Manning \$205,800**

Mixed landscape of cropland and heavily wooded pine areas. Farming or recreational use. 84 Acres.

**Susan G. Floyd (864)331-1600**  
Listed by LoA: 982656



## **Turbeville \$217,140**

Features cropland and a wooded area of pines. Excellent ag property. 103.4 Acres.

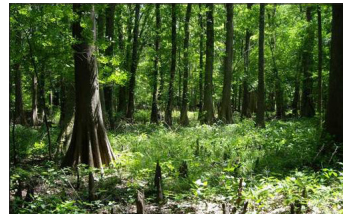
**Susan G. Floyd (864) 331-1600**  
Listed by LoA: 1018201



## **Foreston \$438,510**

Wooded mixture of loblolly pine and hardwoods. Perfect tract for deer hunting.

186.6 Acres.  
**Jim Brown (843)509-1034**  
Listed by LoA: 895351



## **Manning \$252,000**

100 acres standing mature hardwood. Lots of wildlife—deer, turkeys and ducks. 315 Acres.

**Douglas Cutting (843)534-3911**  
Listed by LoA: 733653



Chris Collins  
NMLS# 561480  
843.307.5917  
ccollins@ArborOne.com

Charles Vernon  
NMLS# 561484  
843.250.5182  
cvernon@ArborOne.com